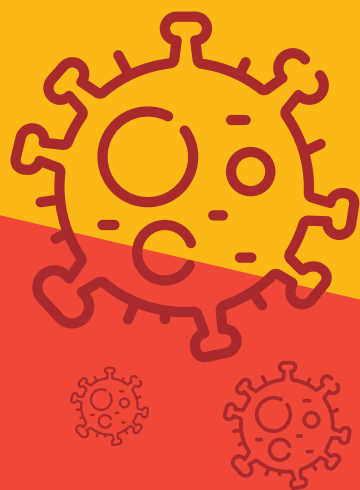




Breakfast, After School & Holiday Clubs



## SAFE PRACTICE GUIDANCE



**GET TO KNOW YOUR  
SOCIAL BUBBLE!**



**2 MINUTE  
HAND WASH  
CHALLENGES!**



**LET'S EXPLORE  
THE  
OUTDOORS!**



**AVOID HI 5'S &  
HANDSHAKES - LET'S DO  
THE TOE TAP!**



**CLEAN  
RESOURCES  
LETS YOU SHINE!**



**ENJOY A NEW  
MENU & SNACK  
TIME SETUP!**

# FOR PARENTS



- During arrival and dismissal, to reduce the interaction, parents/guardians will not be required to drop off or collect inside the school – where possible our teams will collect from school gate or designated drop off/collection area specific to each school
- If possible, registration will take place outside
- Energy Kidz staff can counter sign the children in and out with parents' permission, ensuring that staff/parents do not have to share pens and/or sign in on tablet
- Energy Kidz staff will wear masks where social distancing is not achievable.

# FOR STAFF



- On arrival ALL children and staff will be asked to wash their hands
- Avoid high fives/holding hands, our new meet and greet includes the foot tap or elbow bump
- Staff and Children will wash their hands before and after every new activity session
- Chairs and tables to be set up adhering to the latest social distancing guidelines where possible
- Staff will maintain 'social bubble' guidelines
- Hand sanitiser will be available for staff, children and parents
- Tissues/wipes will be available at all times
- Energy Kidz staff will try to ensure that physical contact children is kept to a minimum and if required relevant PPE will be provided
- Energy Kidz staff will continue to promote key messages of hygiene and well-being as per government guidelines
- Energy Kidz staff will reassure children regularly that steps are being taken to keep them safe
- Energy Kidz staff will ensure the cleaning rota is in place to keep all resources clean and sanitised
- Energy Kidz Staff will prepare food for the children (avoiding buffet style). Where required snack time will be staggered.

# DELIVERY OF ACTIVITIES



- Surfaces, resources and equipment will be sanitised after use
- Activities will be outside as much as possible (weather permitting)
- Sitting activities and circle activities will be delivered in large areas
- Activities adapted to suit social distancing
- Deliver Team games where safe and appropriate to do so
- Areas of the playground to be allocated to specific bubble groups