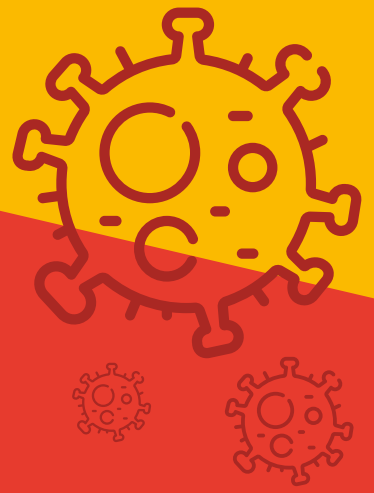




EnergyKidz

Breakfast, After School & Holiday Clubs



SAFE PRACTICE GUIDANCE



**GET TO KNOW YOUR
SOCIAL BUBBLE!**



**2 MINUTE
HAND WASH
CHALLENGES!**



**LET'S EXPLORE
THE
OUTDOORS!**



**AVOID HI 5'S &
HANDSHAKES - LET'S DO
THE VIRTUAL TOE TAP!**



**CLEAN
RESOURCES
LETS YOU SHINE!**



**ENJOY A NEW
MENU & SNACK
TIME SETUP!**

FOR PARENTS



- During arrival and dismissal, to reduce the interaction, parents/guardians will not be required to drop off or collect inside the school – where possible our teams will collect from school gate or designated drop off/collection area specific to each school
- If possible, registration will take place outside
- Energy Kidz staff can counter sign the children in and out with parents' permission, ensuring that staff/parents do not have to share pens and/or sign in on tablet



FOR STAFF



- On arrival ALL children will be asked to wash their hands
- On arrival ALL staff will wash their hands
- Avoid high fives/holding hands, - our new meet and greet includes the foot tap
- Staff and Children will wash their hands before and after every session
- Chairs and tables to be set up adhering to the latest social distancing guidelines where possible
- Staff will reinforce 'social bubble' guidelines
- Hand sanitiser will be available for staff, children and parents where possible
- Tissues/wipes will be available at all times
- Energy Kidz staff will try to ensure that physical contact children is kept to a minimum
- Energy Kidz staff will continue to promote key messages of hygiene and well-being as per government guidelines
- Energy Kidz staff will reassure children regularly that steps are being taken to keep them safe
- Energy Kidz staff will clean all resources, where possible, before and after use
- Staff will minimise children having to make contact with food at club. In our larger clubs we will be staggering snack times within each respective bubble.

DELIVERY OF ACTIVITIES



- Clean surfaces, resources/equipment after use
- Outdoor activities as much as possible
- Where Energy Kidz have access to outdoor or other larger space areas, these will predominantly be used for activities
- Sitting activities and circle activities will be delivered in large areas
- Deliver Team games where appropriate
- Areas of the playground to be allocated to specific bubble groups